



Thank you to all of the artists for participating and generously donating proceeds of their art sales to **transformer!**

**transformer** also thanks our Auction Host Committee Chairs, Artist Nominating Committee, Sponsors, and Volunteers for making this event possible. Special thanks to our Diplomatic Chairs, The Ambassador of Australia, The Honorable Kim Beazley & Ms. Susie Annus, and The Corcoran Gallery of Art + Design for their continued support of **transformer** and the Auction.

Savories, sweets, and drinks have been generously provided by: A.M. Wine Shoppe, Barboursville Vineyards, Birch & Barley, Bistrot Le Zinc, Bistrot Lepic & Wine Bar, Buck's Fishing & Camping, Cashion's Eat Place, Chix, Comet Ping Pong, DC Brau, El Centro D.F., Estadio, Kendall's Cakes, Kushi, Mandu, Masa 14, Matchbox, Meridian Pint, Paisley Fig, Passenger, Posto, Red Velvet, Rogue 24, Room 11, and Yayo Grassi Caterer. The invitation and program design were generously provided by kaze design. Thank you!!

#### **AUCTION DIPLOMATIC CHAIRS**

The Ambassador of Australia, His Excellency  
The Honorable Kim Beazley, AC & Ms. Susie Annus

#### **AUCTION HOST COMMITTEE CHAIRS**

Shigeko Bork  
Kate Damon  
Ayanna Dunn  
Izette Folger  
Tara Goldenberg  
Lori Graham  
Ilyse Hogue  
Maria Hutcheson  
Allison Marvin

#### **AUCTION HOST COMMITTEE**

##### **Gold Level**

Farinaz & Dadi Akhavan  
Sue Alefantis, *Alefantis & Associates*  
Brian Baker, *Bad Religion*  
Shigeko & Timothy Bork  
Kate Damon, *kaze design*  
Izette & Neil Folger  
Peter Hapstak, *HapstakDemetriou+*  
Heiner Contemporary  
Andrea Kirstein, *Kirstein Family Foundation*  
Beth Wehrle & Matthew Miller  
Robert Harris & Scott Sabiston

##### **Silver Level**

Sylvia Ripley & Christopher Addison, *Addison/Ripley Fine Art*  
Mark Medish & Sue Edwards  
Nancy Folger  
Debbie Alex & David Harris  
Mia Guizzetti Hayes & Peter Hayes  
Dale A. Matt & Ken P. Hyle  
John Olson & Tom Kim  
Tim Christensen & Walter Ochinko  
Dorothy Stein  
Septime Webre

##### **Bronze Level**

Hastie Afkhami  
Ami Aronson, *Bernstein Family Foundation*  
Dan Baum  
Anne Bertsch  
José Solís Betancourt  
Marion Blakey  
Mary Pat Bonner  
Christopher Boutlier  
Marley Clements & Austin Bryan  
Matthew S. Butler  
Mark Caldwell, *Heidrick & Struggles*  
Kevin O. Ward & Thomas L. Callahan II  
Louis Cardenas  
Celina Gerbic & Joseph Caruso  
Alison & Tom Cassels  
Greg Albright & Wes Combs

Jamie L. Smith & Leigh Conner, *Conner Contemporary Art*  
Richard M. Daly  
Debbie & Brad Dockser  
Teddy Downey  
Ayanna Dunn  
Praveen Fernandes  
Trevor & Meredith Fitzgibbon, *Fitzgibbon Media, Inc.*  
Katy Gardner  
Lauren Gentile, *Contemporary Wing*  
Mitchell & Tim Gold  
Tara & Steve Goldenberg  
Keith Harley  
Larry J. Hawk  
Lindsey Smith & Jason Herrick  
Robert Kohn  
Brian Komar  
Dave Kumar  
Blair Kutrow  
Dawn Laguens  
Aimee & Robert Lehrman  
Mirella & Dani Levinas  
Carole Feld & David C. Levy  
Benjamin Loewy  
Tim & Karen Lohnes  
Kathlene Collins & David Lowenstein  
Benjamin Malone  
G. M. Martinez  
Chris & Allison Marvin  
Tom Matzzie & Claire Rosche Matzzie  
Kara Mulholland  
Christopher T. Murray  
Sarah Guinan Nixon  
Julie Norris  
Cheryl Numark, *Cheryl Numark Art Advisory*  
Brett & Deborah Orlove  
Alison & Bill Paley  
Peter Pappas  
Dr. Judith Penski  
Heather & Tony Podesta  
Julie Egermayer & Ari Rabin-Havt  
Nicole Rodgers  
Joe Rodota, *Forward Observer, Inc.*  
Randi & Jason Rosenberg  
Catherine & Scott Schirmeier  
Paul Sherrill, *Solis Betancourt & Sherrill*  
Paul So, *Hamiltonian Artists*  
Mark Ewert & Steven Stichter  
Courtney Straus  
Kimball Stroud  
Sarah Tanguy  
Daren Thomas  
Marc Albert & Stephen Tschida  
Heath & Kelly Wilkinson  
Nancy Younan & *Brandon Webster Photography*

8<sup>th</sup> Annual

# t r a n s f o r m e r

## Silent Auction & Benefit Party

Friday, November 18, 2011

*Featuring over 100 original artworks by  
emerging and established contemporary visual artists*

Silent Auction bidding will begin upon guest arrival. Please use the bidding number provided to you at registration. Artwork lots will begin to close at approximately 9:45pm. The last bidding number on a bid sheet is the winning bid. All winning bids are expected to be honored. As lots close and winning bids are determined, Winning Bidders should pay for their artwork at the event registration area. Check, Cash, Mastercard, Visa, and AmEx payment accepted.

**No Auction artworks will be released the night of the event this year. While works should be paid for the night of the Auction, artworks will need to be picked up or delivered post event. See enclosed Auction Rules for details.**

Proceeds benefit **t r a n s f o r m e r** artists, exhibitions, and programs.

**Thank you!**

**t r a n s f o r m e r** is a Washington, DC based 501 (c) 3 non-profit, visual arts organization providing a consistent, supportive, and professional platform for emerging artists to explore and present experimental artistic concepts, build audiences for their work, and advance their careers. **t r a n s f o r m e r** works to strengthen community by supporting emerging artists in their development.

**t r a n s f o r m e r**

1404 P Street, NW Washington, DC 20005 202.483.1102 [www.transformerdc.org](http://www.transformerdc.org)

## CORPORATE SPONSORS

Optimus Prime



hmb art transfer

kaze design

LORI GRAHAM

Elita One

Anybill



Ultra Magnus

AKQA

HapstakDemetriou+  
ARCHITECTURE | DESIGN



## Gallery Sponsors

Adamson Gallery, Washington, DC  
Addison/Ripley Fine Art,  
Washington, DC  
The Art Registry Group,  
Washington, DC  
Civilian Art Projects, Washington, DC

C. Grimaldis Gallery, Baltimore, MD  
The Company, Los Angeles, CA  
Conner Contemporary Art,  
Washington, DC  
G Fine Art, Washington, DC  
Gallery Barry Keldoulis, Sydney, AU  
Garash Galeria, Mexico City, Mexico

Hamiltonian Artists, Washington, DC  
Hemphill Fine Art, Washington, DC  
Jean Albano Gallery, Chicago, IL  
Project 4, Washington, DC  
Reyes + Davis Gallery, Washington, DC  
Studio Gallery, Washington, DC

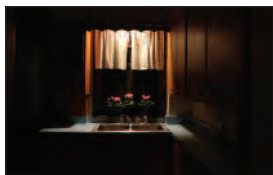
## Restaurant Sponsors

A.M. Wine Shoppe  
Barboursville Vineyards  
Birch & Barley  
Bistrot Le Zinc  
Bistrot Lepic & Wine Bar  
Buck's Fishing & Camping  
Brasserie Beck  
Cashion's Eat Place  
Chix

Comet Ping Pong  
DC Brau  
El Centro D.F.  
Estadio  
Kendall's Cakes  
Kushi  
Mandu  
Masa 14  
Matchbox

Meridian Pint  
Paisley Fig  
Passenger  
Posto  
Red Velvet  
Rice  
Rogue 24  
Room 11  
Yayo Grassi Caterer

Special Thanks to *J.P. Morgan*



**Margaret Adams**

*Recognition and Goodbye*  
2011; digital archival print;  
20"x24"

retail value: \$1200  
starting bid: \$800  
bidding increment: \$50



**Victor Alejandro Aguilar**

*Lower Venusian Octaves*  
2010; digital epson archival  
ultrachrome print on cotton  
rag; 24"x36"

retail value: \$750  
starting bid: \$400  
bidding increment: \$50



**Forest Z Allread**

*The Great Escape*  
*(Video Quilt Patch)*

2011; digital video loop  
retail value: \$1000  
starting bid: \$700  
bidding increment: \$50



**Becky Alprin**

*Cross Section Map No. 1*  
2011; graphite and acrylic  
paint on paper; 22"x30"

retail value: \$1650  
starting bid: \$660  
bidding increment: \$50



**Ken Ashton**

*Portsmouth, Ohio*  
2011; color inkjet print,  
12"x16"

retail value: \$1200  
starting bid: \$700  
bidding increment: \$50  
courtesy of *Civilian Art Projects*



**Joseph Barbaccia**

*Euphoria*  
2008; polystyrene, stainless  
steel pins, sequins;  
17"x21"x21"

retail value: \$1200  
starting bid: \$800  
bidding increment: \$50



**Joan Belmar**

*1969 Stonewall*  
2011; acrylic, ink, gouache,  
mylar, wood and vinyl on  
plywood; 31.5"x31.5"

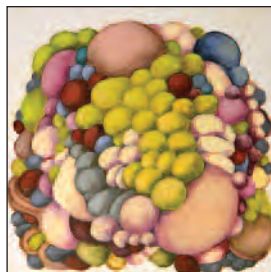
retail price: \$2500  
starting bid: \$1600  
bidding increment: \$100



**Kristina Bilonick**

*Box Print*  
2004; screen prints and  
enameled glass on wooden  
box top; 22"x22"x4"

retail value: \$550  
starting bid: \$350  
bidding increment: \$50



**Erin Boland**

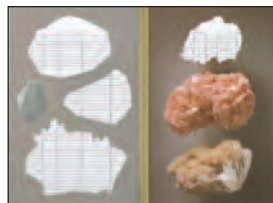
*Untitled*  
2010; oil on panel; 8"x8"  
retail value: \$250  
starting bid: \$50  
bidding increment: \$25



**Margaret Boozer**  
*Rammed Earth: Gold Bank*  
2010; Stancill gold stoneware,  
steel; 47"x32"x2"  
retail value: \$5000  
starting bid: \$2000  
bidding increment: \$100  
courtesy of *Project 4*



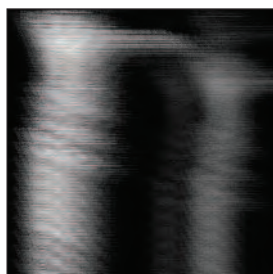
**Tom Bunnell**  
*8x*  
2010; oil on linen; 14"x18"  
retail price: \$1000  
starting bid: \$250  
bidding increment: \$25



**Jessica Cebra**  
*I will never meet Sol LeWitt*  
2011; collage on tissue paper;  
9.75"x7.5"  
retail value: \$400  
starting bid: \$250  
bidding increment: \$25



**Reuben Breslar**  
*Untitled #4*  
2009; construction paper,  
tape; 13"x9"  
retail value: \$250  
starting bid: \$175  
bidding increment: \$25



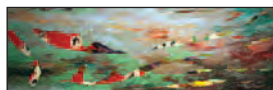
**Wilson Butterworth**  
*Code #3*  
2011; video/animation;  
2:26 minutes  
retail value: \$65  
starting bid: \$30  
bidding increment: \$25



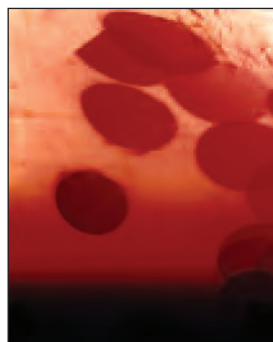
**Mei Mei Chang**  
*Untitled 1*  
2011; mixed media; 11"x14"  
retail value: \$550  
starting bid: \$100  
bidding increment: \$25



**iona rozeal brown**  
*Speakervox*  
2011; mixed media on kraft  
paper; 24"x18"  
retail price: \$1500  
starting bid: \$750  
bidding increment: \$50



**Carolyn Case**  
*Untitled*  
2010; oil on panel; 15"x48"  
retail value: \$4000  
starting bid: \$2000  
bidding increment: \$100



**Natalie W. Cheung**  
*Untitled*  
2011; color pinhole lambda;  
22"x27"  
retail value: \$1500  
starting bid: \$1000  
bidding increment: \$100  
courtesy of *The Art Registry Group*





**Mahwish Chrishty**

*MQ-1*

2011; gouache on paper;  
21"x8"

retail value: \$4000  
starting bid: \$1500  
bidding increment: \$100



**Bradley Chriss**

*Poltergeist*

2011; gouache on paper;  
12.5"x5.5"

retail value: \$400  
starting bid: \$250  
bidding increment: \$25



**Oreen Cohen**

*Transmission #12 of the  
Interchangeable Parts Series*

2011; photo collage; 16"x18"  
retail value: \$500  
starting bid: \$350  
bidding increment: \$50



**Billy Colbert**

*Georgia Avenue*

2010; mixed media; 35"x46"  
retail price: \$4500  
starting bid: \$2500  
bidding increment: \$100



**Cynthia Connolly**

*Cana, Virginia, 11-25-06 and  
Cana, Virginia, 1-5-07*

2011; two gelatin silver prints;  
each print 5"x7"  
retail value: \$1500  
starting bid: \$650  
bidding increment: \$50



**Lely Constantinople**

*Young's Chicken Shack,  
Washington, D.C.*

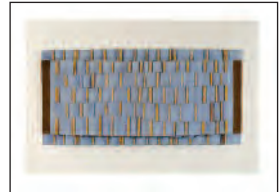
2011; digital photograph;  
11"x14"  
retail value: \$750  
starting bid: \$225  
bidding increment: \$25



**Sean Cordeiro & Claire Healy**

*Package Tour*

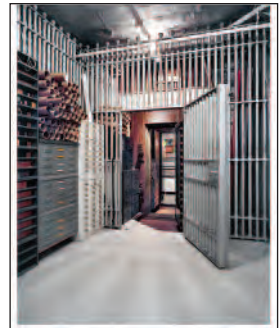
2003; lambda print  
(installation of centurian army  
tank, milk crates, cargo  
pallettes, pine, cardboard  
tubes, deck chairs, esky,  
barbeque, boogie board,  
fishing rod, gaffer tape),  
edition of 10; 31"x47"  
retail price: \$5500  
starting bid: \$3000  
bidding increment: \$100  
courtesy of *Gallery Barry  
Keldoulis, Sydney*



**Sheila Crider**

*Untitled*

2009; acrylic, bamboo,  
recycled paper; 9"x22"x2"  
retail value: \$1800  
starting bid: \$1000  
bidding increment: \$100



**Leigh Davis**

*190 Bowery*

2009; C-print; 8x10"  
retail value: \$250  
starting bid: \$75  
bidding increment: \$25



**Frank Hollam Day**

*San Vicente Trees*

1998; archival pigment print;  
36"x36"

retail value: \$3100

starting bid: \$1250

courtesy of Addison/Ripley  
Fine Art



**Jenn DePalma**

*Cuboid Silhouette 1*

2011; gesso and graphite on  
paper; 9"x9"

retail value: \$250

starting bid: \$100

bidding increment: \$25



**Jenn DePalma**

*Cuboid Silhouette 2*

2011; gesso and graphite on  
paper; 9"x9"

retail value: \$250

starting bid: \$100

bidding increment: \$25



**Lily deSaussure**

*180: Half, Quarter, Front,  
Quarter, Half*

2011; colored pencil on

paper; 14"x22"

retail price: \$600

starting bid: \$420

bidding increment: \$50



**Linda DiGusta**

*September Pair 2011*

2011; mixed media on paper;  
9"x12"

retail value: \$550

starting bid: \$100

bidding increment: \$25

courtesy of *Gia Ricci  
Contemporary Art, Brooklyn, NY*



**Adam Dwight**

*Candy, Cari, and the Birds  
(from the Case of Candy  
Lightner series)*

2011; ink and gouache on

paper; 24" x 24"

retail value: \$650

starting bid: \$400

bidding increment: \$50



**Mark Earnhart**

*Pendleton Coat*

2007; lead and hemp string;

28"x55"x12"

retail value: \$800

starting bid: \$320

bidding increment: \$25



**Maribeth Egan**

*terribly adequate*

2011; archival digital print,

gouache, embroidery floss;

13"x9"

retail value: \$500

starting bid: \$250

bidding increment: \$25



**Dana Ellyn**

*Stage Fright*

2011; etching on scratchboard  
(hand etched original); 8.5"x11"

retail value: \$120

starting bid: \$80

bidding increment: \$25

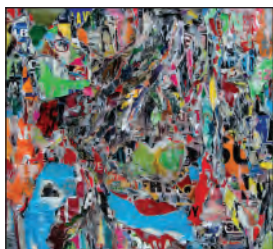




**Edgar Endress**  
*untitled/Part of the Nivakle series*  
 2010; digital print; 28"x30"  
 retail value: \$1000  
 starting bid: \$300  
 bidding increment: \$25



**Mia Feuer**  
*Alberta Still Life*  
 materials: styrofoam, chrome drum hardware, enamel and latex paint, tire rubber, opalescent pigment, red and black glitter; approx dimensions: 6'x5'x5'  
 retail value: \$6500  
 starting bid: \$3700  
 bidding increment: \$100  
 courtesy of *Conner/\*gogo*



**Thom Flynn**  
*Untitled*  
 2011; found poster, staples, resin, on wood panel; 47"x50"  
 retail price: \$6500  
 starting bid: \$2200  
 bidding increment: \$100



**Mayako Fujimoto**  
*Crocus*  
 2011; colored pencil, mechanical pencil, watercolors on BaronKent paper; 29"x20"  
 retail value: \$800  
 starting bid: \$500  
 bidding increment: \$50



**Saúl Gómez**  
*Cosmonauta*  
 2010; oil paint; 14"x20"  
 retail price: \$1500  
 starting bid: \$1000  
 bidding increment: \$100  
 courtesy of *Garash Galeria*



**Saúl Gómez**  
*Aqui*  
 2011; colored pencil; 20"x24"  
 retail price: \$1600  
 starting bid: \$1100  
 bidding increment: \$100  
 courtesy of *Garash Galeria*



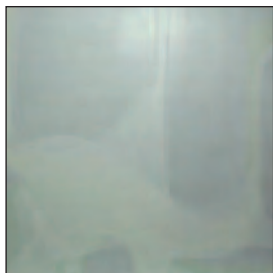
**Elizabeth Graeber**  
*Vintage Gloves*  
 2011; pen, ink, watercolor and colored pencil on paper; 14"x17"  
 retail value: \$300  
 starting bid: \$75  
 bidding increment: \$25



**Tom Greaves**  
*toulouse*  
 2011; digital print, acrylic, hot press, steel wire, artist's frame; 8.5"x19"x2"  
 retail value: \$275  
 starting bid: \$150  
 bidding increment: \$25

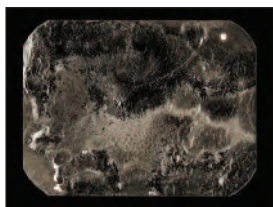


**Tatiana Gulenkina**  
*Tank Cleaning Day*  
 2010; digital C print; 16"x24"  
 retail value: \$400  
 starting bid: \$200  
 bidding increment: \$25



**Ryan Hackett**

*Untitled 10/2010*  
2010; oil and alkyd on  
honeycomb aluminum panel;  
29.5" x 29.5"  
retail: \$3000  
starting bid: \$900  
bidding increment: \$50



**Muriel Hasbun**

*X post facto (17.3)*  
2009; archival pigment print;  
10"x8"  
retail value: \$900  
starting bid: \$500  
bidding increment: \$50



**Linda Hesh**

*Tiny Fear Billboard*  
2011; archival ink jet print,  
plastic; 3"x4"x3.5"  
retail value: \$450  
starting bid: \$300  
bidding increment: \$25



**Joe Hicks**

*Spark Plug*  
2008; porcelain; 50" tall  
retail value: \$1100  
starting bid: \$800  
bidding increment: \$50



**Ryan Hill**

*Sex, Death, Money*  
2009; colored pencil on  
paper; 18"x25"  
retail value: \$1000  
starting bid: \$550  
bidding increment: \$50  
courtesy of *Civilian Art Projects*



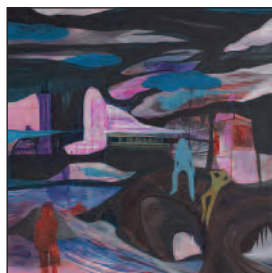
**Max Hirshfeld**

*Louvre*  
2010; archival ink jet print;  
18" x 10.8"  
retail value: \$1200  
starting bid: \$600  
bidding increment: \$50  
courtesy of *Hemphill Fine Arts*



**James Huckenpahler**

*house of cards*  
2011; ink-jet print on canvas;  
30"x40"  
retail value: \$3000  
starting bid: \$1500  
bidding increment: \$100  
courtesy of *Hemphill Fine Arts*



**Erick Jackson**

*High Tide Hang*  
2010; gouache and wet  
pigment on wood panel;  
12"x12"  
retail value: \$1000  
starting bid: \$500  
bidding increment: \$50  
courtesy of *Civilian Art Projects*



**Susan Jamison**

*Stick Me Up*

2008; egg tempera on panel;  
24"x18"

retail value: \$4500

starting bid: \$2700

bidding increment: \$100



**Mariah Anne Johnson**

*Tent Study*

2011; ink, acrylic, and  
watercolor on paper; 12"x9"

retail value: \$75

starting bid: \$40

bidding increment: \$25



**David Jung**

*Sue*

2011; acrylic, resin on baltic  
birch; 8"x11"

retail value: \$1200

starting bid: \$700

bidding increment: \$50



**Kevin Kepple**

*Fossil Minor Pale*

2007; glue medium, ink and  
varnish on baltic birch;

11.5"x23.25"

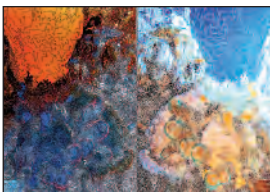
retail value: \$2800

starting bid: \$1600

bidding increment: \$100

courtesy of *Addison/Ripley*

*Fine Art*



**Matthew Kerkhof**

*Underwater (Cozumel)*

2011; digital print from pen  
and ink drawing on

photograph; 19.25"x27.25"

retail value: \$240

starting bid: \$100

bidding increment: \$25



**Anna Kielman**

*Garner*

2010; black foam sheets,  
used mannequin, clear satin

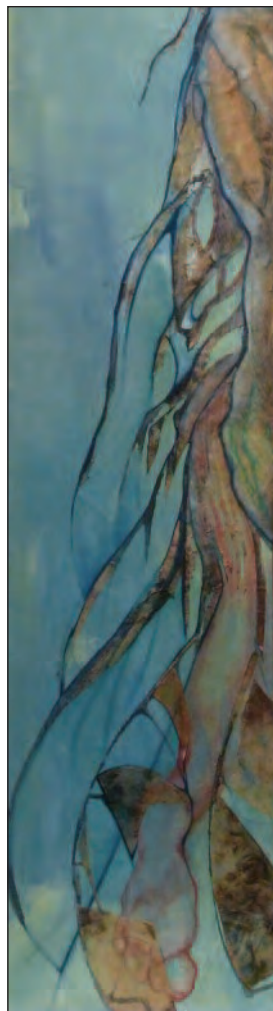
polyurethane finish;

13"x36"x9"

retail value: \$750

starting bid: \$300

bidding increment: \$25



**Micheline Klagsbrun**

*'Fin-green' nymph*

2006; mixed media on  
canvas; 48"x12"

retail value: \$1800

starting bid: \$1100

bidding increment: \$100





**David Knobel**

*Q\*Bert's Revenge*

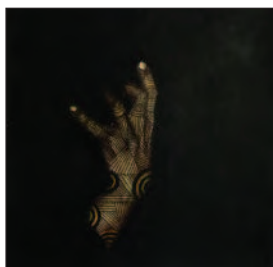
2011; mixed on 300 lb. watercolor paper; 38" x 28"  
retail value: \$2500  
starting bid: \$1250  
bidding increment: \$100



**Andrew Kozlowski**

*Standard Disaster*

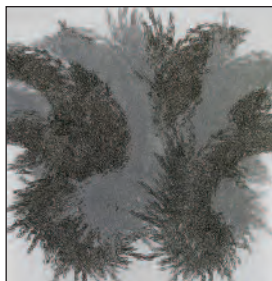
2010; screen print; 20"x30"  
retail value: \$600  
starting bid: \$300  
bidding increment: \$25



**Ivan Krasoievitch**

*L.P. Paco*

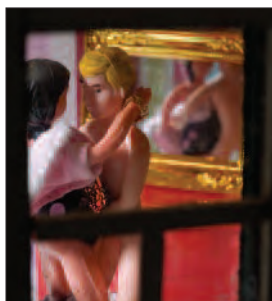
2010; mixed media; 12"x12"  
retail value: \$900  
starting bid: \$100  
bidding increment: \$25  
courtesy of *Garash Galeria*



**Sarah Laing**

*Tracks*

2011; ink on mylar; 12"x11"  
retail value: \$350  
starting bid: \$275  
bidding increment: \$25



**Bridget Sue Lambert**

*i'm ready for my happy ending*

2011; archival pigment print mounted on sintra (edition of 5); 30"x26"  
retail value: \$900  
starting bid: \$630  
bidding increment: \$50



**Nilay Lawson**

*Temezcal*

2011; acrylic on masonite; 5.5"x7.25"  
retail value: \$800  
starting bid: \$400  
bidding increment: \$50



**Joyce Yu-Jean Lee**

*Amargosa Vanitas i, Amargosa Vanitas ii*

2011; face-mounted archival print; 16"x16" series of 2  
retail value: \$750 each  
starting bid: \$450 each  
bidding increment: \$50  
courtesy of *Hamiltonian Gallery*



**Jesus Leon / Domestic Fine Arts**

*The rhythm of the absent burden*

2010; c-print; 16" x 20"  
retail value: \$1700  
starting bid: \$1000  
bidding increment: \$100  
courtesy of *Garash Galeria*



**Pepa Leon**

Untitled

2011; mixed media on canvas; 45.5"x41.5"  
retail value: \$2000  
starting bid: \$1500  
bidding increment: \$100  
courtesy of *Reyes & Davis Gallery*



**Amy Lin**

*Logic*  
2006; colored pencil on paper; 29"x29"  
retail value: \$2500  
starting bid: \$1000  
bidding increment: \$100  
courtesy of Addison/Ripley Fine Art



**Emily Lyons**

*Ammuendo*  
2011; oil on canvas; 1'x1'  
retail value: \$550  
starting bid: \$350  
bidding increment: \$50



**Katherine Tzu-lan Mann**  
*Weft 1*

2010; acrylic and sumi ink on cut papers; 20"x16"  
retail value: \$700  
starting bid: \$350  
bidding increment: \$50



**Marissa Long**

*Untitled (Emily)*  
2010; c-print; 8"x10"  
retail value: \$400  
starting bid: \$200  
bidding increment: \$25



**Kate MacDonnell**

*halo*  
2009; archival inkjet print (1 of 4); 26"x40"  
retail value: \$2400  
starting bid: \$1400  
bidding increment: \$100  
courtesy of Civilian Art Projects



**Sarah Martin**

*Abscess 2*  
2009; screen print, gesso, acrylic graphite on paper; 10.5"x14"  
retail value: \$300  
starting bid: \$215  
bidding increment: \$25



**Laurel Lukaszewski**

*Restless*  
2011; porcelain, 6"x11.5"x10"  
retail value: \$1100  
starting bid: \$550  
bidding increment: \$50



**Isabel Manalo**

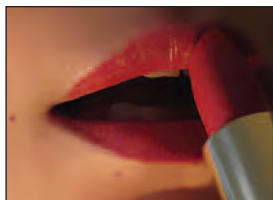
*Dix Huit*  
2010; acrylic and cut photographs on mylar; 16"x20"  
retail value: \$1200  
starting bid: \$400  
bidding increment: \$50  
courtesy of Addison/Ripley Fine Art



**Gina Matchitt**

*Large Fries*  
2009; woven photographs and recycled food packaging; 48"x35"  
retail value: \$3000  
starting bid: \$500  
bidding increment: \$50





**Carolina Mayorga**

*Baby Doll*

2010; archival inkjet print;

16"x20"

retail value: \$320

starting bid: \$200

bidding increment: \$25



**Patrick McDonough**

*102406-beer mirror*

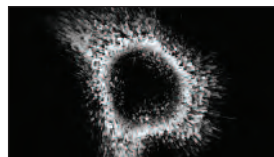
2010; glass etching cream on

mirror; 30"x30"

retail value: \$1750

starting bid: \$1150

bidding increment: \$100



**Brandon Morse**

*A Charged Shape (edition 2/3)*

2011; generative video on Blu-Ray

retail value: \$4500

starting bid: \$3500

bidding increment: \$100

courtesy of *Conner*

*Contemporary Art*



**Michelle McAuliffe**

*Untitled*

2010; digital print;

15.25"x19.25"

retail value: \$475

starting bid: \$175

bidding increment: \$25



**Linn Meyers**

*untitled*

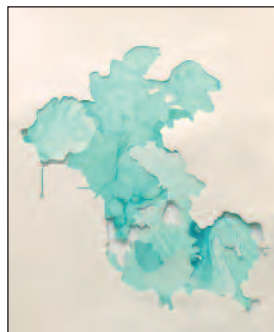
2011; hand colored screen

print; 11"x14"

retail value: \$300

starting bid: \$200

bidding increment: \$25



**Megan Mueller**

*Untitled 1*

2011; cut and stained paper;

24"x18"

retail value: \$475

starting bid: \$200

bidding increment: \$25



**J.J. McCracken**

*Fruit for Geophages*

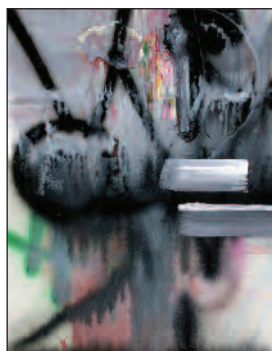
2010; unfired clay and wood;

12"x36"x4"

retail value: \$1600

starting bid: \$900

bidding increment: \$50



**Maggie Michael**

*Untitled (film)*

2007; latex, ink, enamel,

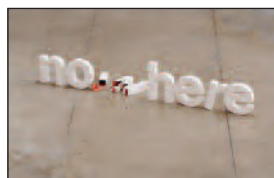
spray paint on panel; 20"x16"

retail value: \$5000

starting bid: \$3000

bidding increment: \$100

courtesy of *G Fine Art*



**Thomas Müller**

*now here*

2010; clay and glaze;

12"x60"x10"

retail value: \$3500

starting bid: \$2500

bidding increment: \$100

courtesy of *Project 4*



**William A. Newman**

*Tzimtzum*

welded and polished stainless steel; 25"x34"x35"  
retail value: \$12,000  
starting bid: \$4000  
bidding increment: \$100  
courtesy of *Adamson Gallery*



**Christina Osheim**

*Drink Me*

2011; porcelain; 13.5"x5"x5"  
retail value: \$175  
starting bid: \$50  
bidding increment: \$25



**Caitlin Teal Price**

*Mall lot*

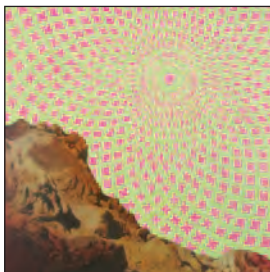
2010; photographic negative, archival pigment print; 21"x27"  
retail value: \$1350  
starting bid: \$900  
bidding increment: \$50



**Cara Ober**

*Certain Flowers*

acrylic and oil on canvas;  
40"x40"  
retail value: \$3200  
starting bid: \$1700  
bidding increment: \$100  
courtesy of *Civilian Art Projects*



**Brian Phillips**

*June 4*

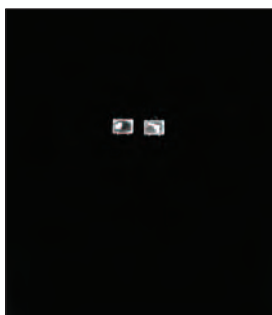
2010; acrylic on panel; 24"x24"  
retail value: \$2500  
starting bid: \$750  
bidding increment: \$50



**Jack Rassmussen**

*Ghosting*

2011; acrylic and collage;  
14"x20"  
retail value: \$1000  
starting bid: \$400  
bidding increment: \$50  
courtesy of *Jean Albano Gallery, Chicago, IL*



**Jennifer O'Neill**

*Baggage Claim*

2008; silver gelatin photogram; 22"x20"  
retail value: \$800  
starting bid: \$500  
bidding increment: \$50



**Jefferson Pinder**

*Deserter Series (Possum)*

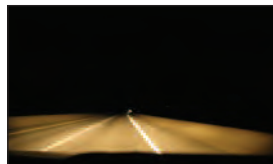
2011; digital print; 26"x36"  
retail value: \$1200  
starting bid: \$800  
bidding increment: \$50  
courtesy of *G Fine Art*



**Siobhan Rigg**

*Other Supermen*

2011; video stills – set of 2 ink jet prints mounted individually on diebond; 9"x16"  
retail value: \$625  
starting bid: \$250  
bidding increment: \$25



**E. Brady Robinson**

*Night Road*

2011; ink jet print; 36"x48"  
retail value: \$2000  
starting bid: \$1250  
bidding increment: \$100



**Amber Robles-Gordon**

*Marta*

1991; photo collage; 12"x14"

retail value: \$350

starting bid: \$150

bidding increment: \$25



**Francisco Rosario**

*directo*

2011; medium format film

photography, digital

illustration, fotochop, archival

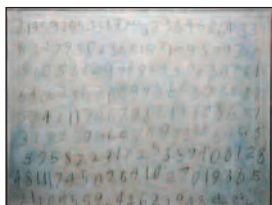
digital print on watercolor

paper; 15"x15"

retail value: \$1052

starting bid: \$350

bidding increment: \$50



**Hannah Hope Rose**

*A Piece of Pi*

2011; acrylic on prepared board

and etched lucite; 11"x14"x1.5"

retail value: \$650

starting bid: \$200

bidding increment: \$25

courtesy of *Hemphill Fine Arts*



**Robin Rose**

*Keith & John*

2011; woden drum sticks,

mirror glass, fish hooks, steel

wool, tacks, stainless cable;

drum sticks 16", with cable 30"

retail value: \$6500

starting bid: \$250

bidding increment: \$25

courtesy of *Hemphill Fine Arts*



**Lisa Rosenstein**

*Rain Chain III*

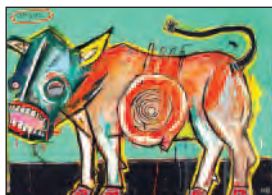
2011; mixed media on

canvas; 24"x36"

retail value: \$800

starting bid: \$300

bidding increment: \$25



**Matt Sesow**

*Angus (with Japanese Cesium)*

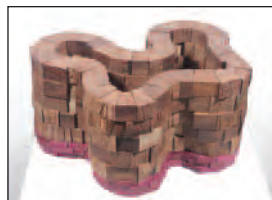
2011; oil on stretched canvas;

30"x40"

retail value: \$800

starting bid: \$400

bidding increment: \$50



**Foon Sham**

*Mott*

2011; walnut and purple

heart; 11"x7"x5"

retail value: \$1500

starting bid: \$1200

bidding increment: \$100

courtesy of *Project 4*



**Ivan Sigal**

*Cricket field, Dhaka,*

*Bangladesh*

2007; 35mm film, panorama,

digital print; 40"x17"

retail value: \$2000

starting bid: \$1300

bidding increment: \$100



**Dan Steinhilber**

*Untitled*

2011; shrink-wrap, styrofoam;

67"x15"x5"

retail value: \$5000

starting bid: \$2000

bidding increment: \$100

courtesy of *G Fine Art*



**Zach Storm**

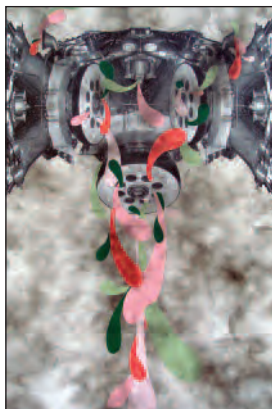
*Roller Coaster 3*

2011; pen and marker on paper; 9"x12"

retail value: \$500

starting bid: \$100

bidding increment: \$25



**Justin Strom & Lenore Thomas**

*(Satan's Camaro)*

*It tastes like chicken, if chicken tastes like candy*

2008; screen print and smoke on panel; 24"x40"

retail value: \$1200

starting bid: \$600

bidding increment: \$50



**Jay Stuckey**

*Il Buono, Il Cattivo, Il Brutto*

2011; oil pastel, graphite on paper; 11"x15"

retail value: \$600

starting bid: \$400

bidding increment: \$50

courtesy of *The Company*



**Noelle K. Tan**

*Untitled 12*

2001-2002; silver gelatin print; 16"x20"

retail value: \$2500

starting bid: \$1500

bidding increment: \$100

courtesy of *Civilian Art Projects*



**Tang**

*Camp*

2011; homemade rubber stamps on kozo paper; 20"x13"

retail value: \$350

starting bid: \$80

bidding increment: \$25



**Lisa Marie Thalhammer**

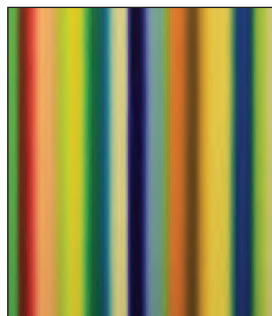
*Protest Poster in Response to the Smithsonian's Censorship of Artist David Wojnarowicz*

2011; enamel on board; 64"x30"

retail price: \$1200

starting bid: \$450

bidding increment: \$50



**Dan Treado**

*Candy Coated Clown*

2003; oil on dibond; 12"x10"

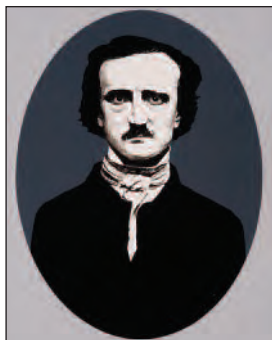
retail value: \$1600

starting bid: \$1000

bidding increment: \$100

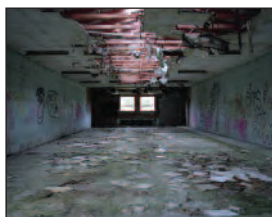
courtesy of *Addison/Ripley Fine Art*





**René Treviño**

*Edgar Allen Poe*  
2010; acrylic on mylar;  
33"x41"  
retail value: \$3500  
starting bid: \$2000  
bidding increment: \$100  
courtesy of *C. Grimaldis*  
*Gallery*



**Kristoffer Tripplaar**

*Mess Hall*  
2010; C-print; 11"x14"  
retail value: \$350  
starting bid: \$100  
bidding increment: \$25



**Jessica van Brakle**

*Captured View*  
2011; acrylic, ink and pencil  
on canvas; 15"x30"  
retail value: \$1200  
starting bid: \$800  
bidding increment: \$50  
courtesy of *Hamiltonian*  
*Gallery*



**Jenny Walton**

*Untitled*  
2009; monotype; 30"x22"  
retail value: \$700  
starting bid: \$420  
bidding increment: \$50



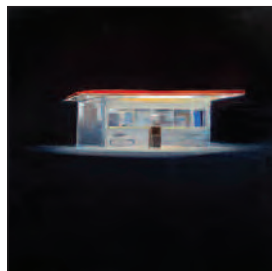
**Mark Wiener**

*untitled: 3:43:39 pm*  
2011; mixed media on mylar;  
14"x11"  
retail value: \$1200  
starting bid: \$350  
bidding increment: \$50  
courtesy of *Michelle Rosenfeld*  
*Gallery, NY, NY*



**Wilmer Wilson IV**

*Installation View: Fireplace and*  
*Stone Wall*  
2011; ultrachrome pigment  
print (edition of 9); 16"x20"  
retail value: \$550  
starting bid: \$375  
bidding increment: \$50  
courtesy of *Conner/\*gogo*



**Trevor Young**

*Fried Cake*  
2011; oil, alkyd on panel;  
12"x12"  
retail value: \$1200  
starting bid: \$830  
bidding increment: \$50  
courtesy of *Civilian Art Projects*



# collector's view2012

PRIVATE COLLECTIONS OF CONTEMPORARY VISUAL ART

---

**transformer** is honored to announce the following Hosts of our 5<sup>th</sup> Annual Spring Collector's View Series:

ROBERT SHAPIRO  
CHERYL NUMARK  
ELIZABETH MILLER & DAN SALICK  
THOM HALLER & BILL WALLACE

***Many thanks to all of the past Hosts of this dynamic Series, including:***

Heather & Tony Podesta, Christine Varney & Tom Graham, Shigeko & Tim Bork, Peter F. Hapstak III, Barbara & Aaron Levine, Farinaz & Dadi Akhavan, Lorie Peters Lauthier, Paul Yandura & Donald Hitchcock, Mirella & Dani Levinas, Aimee & Robert Lehrman, Dr. Judith Penski & Robin Rose, Isabel & Ricardo Ernst, and Anna-Lena Wetzel & David Kamenetzky.

Additionally, we thank Billy Colbert, for hosting the first "Artist View" and J.P. Morgan for hosting the first "Corporate View"—both part of the 2011 Series.

Details on **transformer's** 2012 Collector's View Series will be available January 2012.

For more information visit **[transformerdc.org](http://transformerdc.org)**.

Since June 2002, **transformer** has presented the work of several hundred emerging artists in over 150 comprehensive exhibitions and programs. **transformer** pays artists honoraria, covers all costs of presenting an exhibition, and supports artists in their ideas and work on every level possible.

Please visit **transformer's** website for an overview of our exhibitions, programs and services: [www.transformerdc.org](http://www.transformerdc.org)

**transformer** is supported by:

The Andy Warhol Foundation for the Visual Arts, The CrossCurrents Foundation, The DC Commission on the Arts & Humanities/NEA, The Morris & Gwendolyn Cafritz Foundation, The National Endowment for the Arts' (NEA) Access to Artistic Excellence Award, The Robert Lehman Foundation, **transformer's** Board & Advisory Council, The Visionary Friends of **transformer**, and the tireless in-kind donations of time and expertise by friends, volunteers and supporters.

### THANK YOU!

#### STAFF

Victoria Reis, *Executive & Artistic Director*  
Natalie W. Cheung, *Exhibitions Coordinator*  
Ebony Dumas, *Gallery Manager*  
Kaitlin Manning, *Development Associate*  
Eames Armstrong, *Gallery Assistant*  
Stephanie Kwak, *Auction Assistant*

#### BOARD OF DIRECTORS

James Alefantis, Board President, Proprietor, *Buck's Fishing & Camping* and *Comet Ping-Pong*  
Shigeko Bork, Founder & Director, *mu project*

iona rozeal brown, Artist  
Christopher F. Carr, Vice President, *J.P. Morgan*

Billy Colbert, Artist, Educator

Kate Damon, Board Vice-President, Principal, *kaze design*

Izette Folger, Board Treasurer, Artist

Steve Goldenberg, CEO, *Interfolio*

Jason Herrick, Museum & Corporate Art Services, *Sotheby's*

Ryan Hill, Board Secretary, Artist, Manager of Interpretive Programs & Curatorial Research Associate, *Hirshhorn Museum & Sculpture Garden*

Tom Kim, Attorney

Micheline Klagsbrun, Artist; President, *CrossCurrents Foundation*

Allison G. Marvin, Director, *Sightline*

Nick Pimentel, Art Director, *Toolbox & Planaria Designs*, Owner, *Room 11*

Victoria Reis, Co-Founder, Executive & Artistic Director, *Transformer*

Daren Thomas, Director of Institutional & Leadership Gifts, *Washington Performing Arts Society*

#### ADVISORY COUNCIL

Ken Ashton, Artist, Museum Technician for Works on Paper, *Corcoran Gallery of Art*;

Nell Breyer, Research Affiliate, *Massachusetts Institute of Technology*, *Center for Advanced Visual Studies*;

Kendall Buster, Artist, Professor of Sculpture, *Virginia Commonwealth University*; Molly Donovan, Associate Curator,

Modern & Contemporary Art, *National Gallery of Art*; Kristen Hileman, Curator of Contemporary Art,

*The Baltimore Museum of Art*; James Huckenpahler, Artist; Judy Jashinsky, Artist; Jayme McLellan, Director, *Civilian*

*Art Projects*; William A. Newman, Artist, Professor of Painting, *Corcoran College of Art + Design*;

Vesna Pavlovic, Artist; Beatrice Valdes Paz, Artist; TM Pugh, Mixed-Media™ Artist;

Casey Smith, Educator, *Corcoran College of Art + Design*; Dan Steinhilber, Artist;

Sarah Tanguy, Independent Curator, Writer & Critic; Jon Winet, Artist

#### AUCTION ARTIST NOMINATING COMMITTEE

Kristina Bilonick, Artist, Owner & Creative Director, *Pleasant Plains Workshop*;

iona rozeal brown, Artist; Margaret Boozer, Artist, Founder & Director, *Red Dirt Studio*;

Natalie W. Cheung, Artist, Educator, Exhibitions Coordinator, *Transformer*; Beatrice Galton,

Evelyn Nef Associate Curator of Contemporary Art, *Corcoran Gallery of Art*; Mariah Anne Johnson,

Artist, Founder, *Porch Projects*; Brandon Morse, Artist, Professor of Art, *University of Maryland*;

Jefferson Pinder, Artist, Professor, *University of Maryland*; Robin Rose, Artist;

Lisa Marie Thalhammer, Artist, Director of Education Programs, *Artisphere*

**transformer**

1404 P Street, NW Washington, DC 20005 202.483.1102 [www.transformerdc.org](http://www.transformerdc.org)